



Kette
 Felix Kubermüller
 Prof. Tom Emerson
 Thomas Wollenberger, Christoph Jank
 Regine Schönbach
 Prof. Dr. Christian Schmid
 Regine Schönbach
 Dorothee David-Herter, Daniel Studer

Zürich, 0044

Between daylight and one o'clock in the morning, the site is very well connected to the whole city. The last train of every train line ends up at Tramdepot Elisehethaus, right beside the site. This fact led to the idea to integrate the main space - originally designed as a residential program in the programme - as a nightclub. Every people take the last train from all over the city to go clubbing at night.

Similar to the existing building, the structure is elevated to keep the current quality of air, such as the frequency of the open ground floor to children and teens from the neighbourhood and the value of the building as a landmark.

During daytime, the building is inhabited by the teenagers of the youth centre in the first floor, musicians practicing in the three uppermost floors and the radio broadcaster of GDR 134. As the building stands on pillars, the ground floor is kept free from a flexible space partly covered by the building, partly open to the sky, providing a minimum of infrastructure to permit a wide range of use during various times of day and various media markets, underfloor distributors for power and fresh water and a new, smooth asphalt setting for skaters.

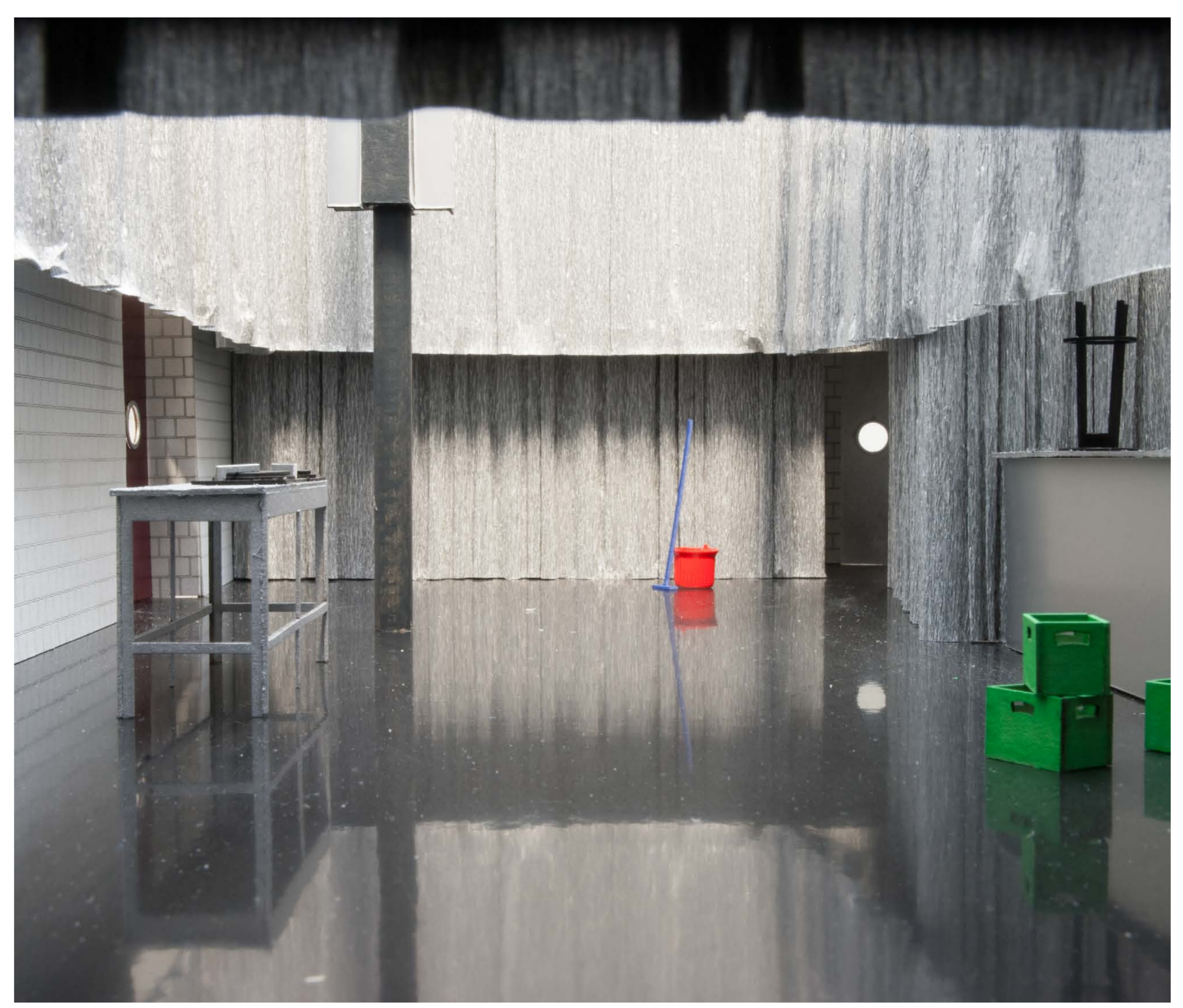
The building has a circulation of two stairs and a lift. While the main staircase is part of the bigger and follows the rules of the building, the nightclub stair is a feature of the perception of the building as something being different of the site.

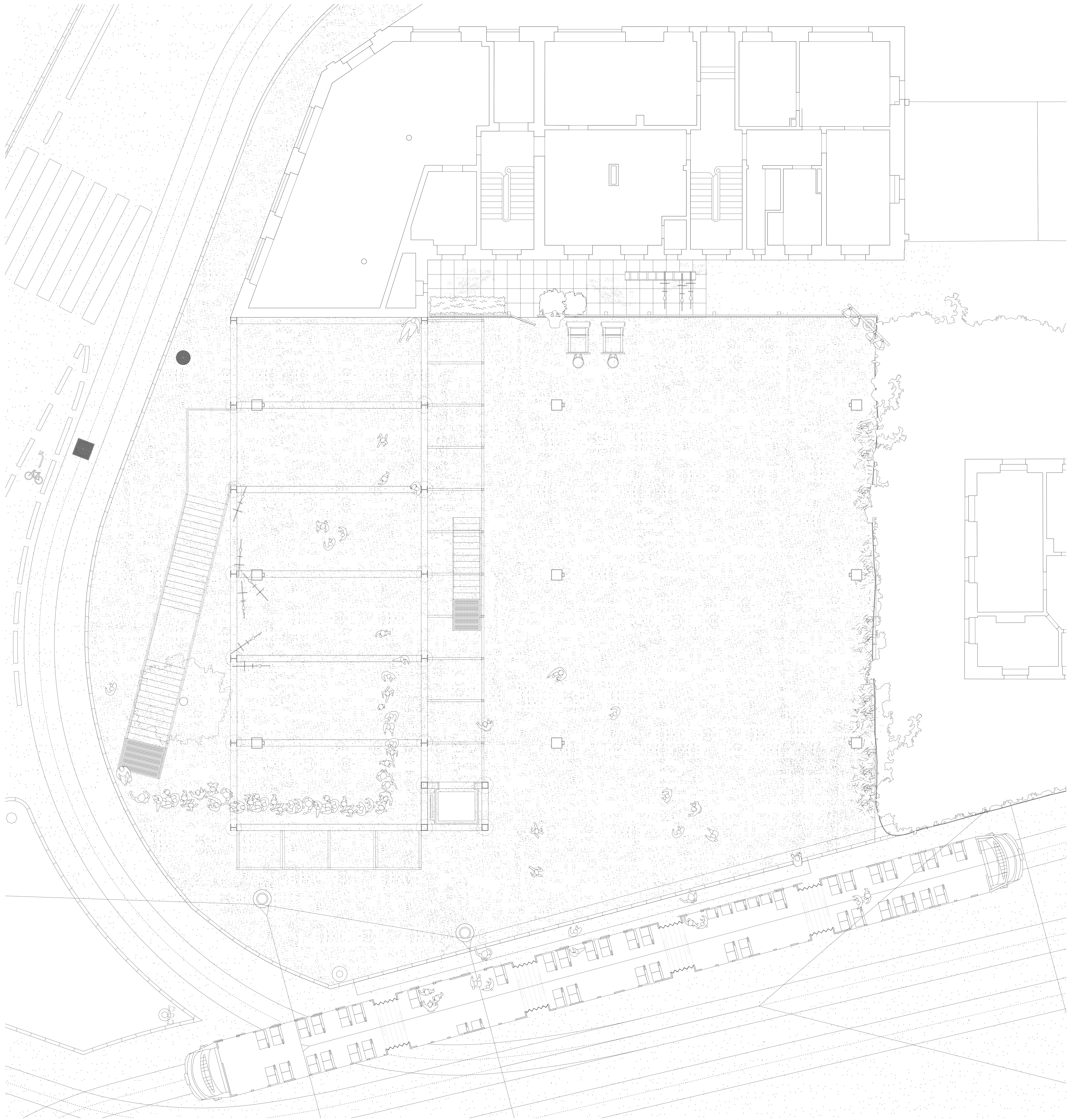
The nightclub is divided by silver curtains in two different lengths, the full room height long curtain provides a room where the skaters establish a main space by releasing from the outer shell. Important was to avoid views from outside into the nightclub.

The rehearsal rooms work as simple boxes, which can be widely opened to the bigger room by heavy tripwings. To change acoustic properties, every rehearsal room has the possibility to fix the blockwork or to separate the room by curtains.

Constructionally, the building is planned as an exposed steel structure. To avoid cold bridges, every floor is treated individually, while the high amount of insulation would be inefficient for a normal building. A double right to exist in a house for music as it helps to prevent sound transmission from floor to floor. For acoustic reasons the floors are fixed with blockwork. As the exposed steel structure is an important kind of construction and often leads to a very technical expression, the focus was to design a facade which avoid this technical facade without imposing an ornament. The result is a great metal facade where metal facade which can be partly opened or completely closed and establishes together with the structure, ventilation and structurally enabled elements for the night competition.

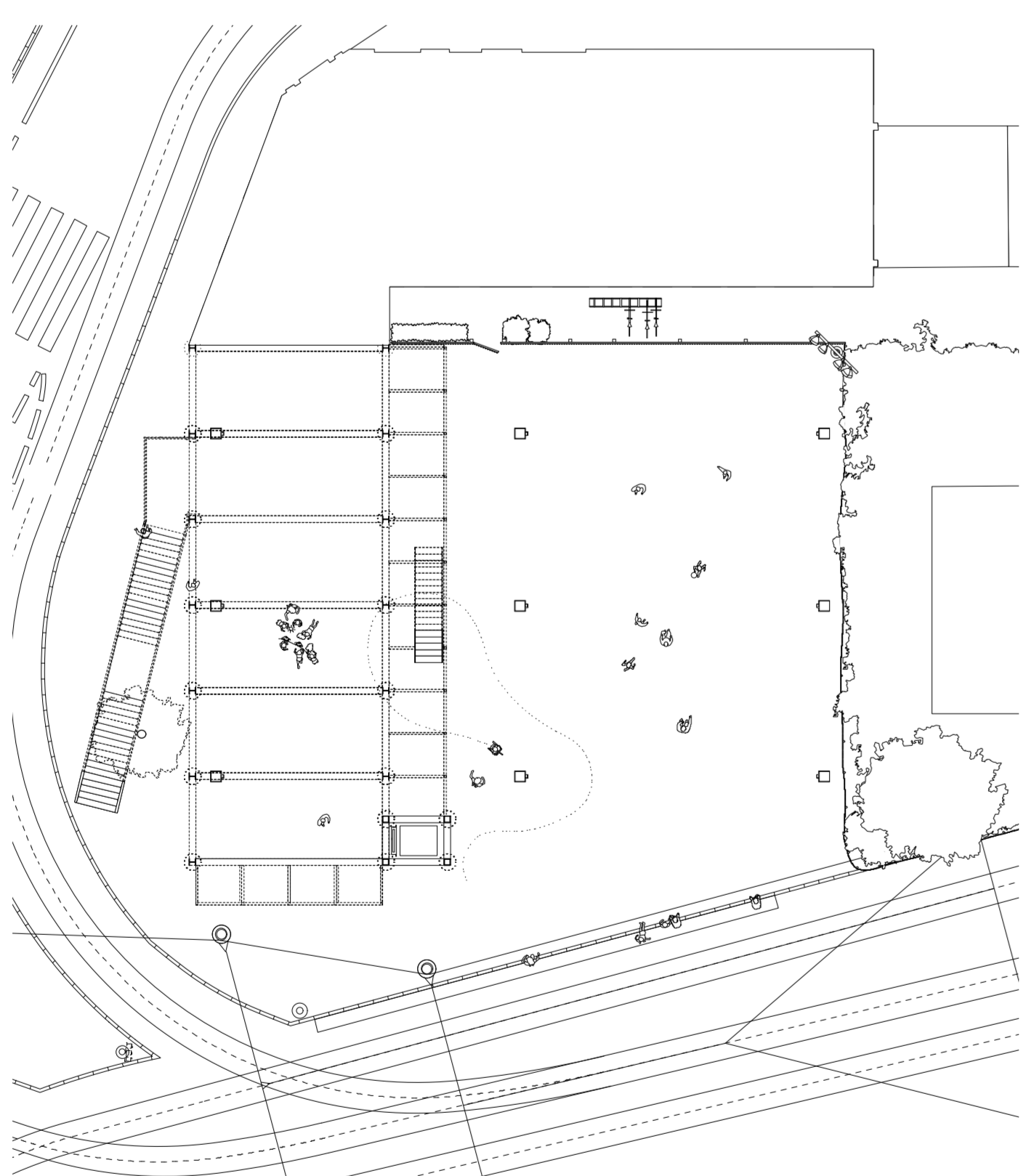
The structure is stiffened by concrete elements between the flanges of the floor beams and fixed pillars. The bigger works as a hanging structure, dependent on the primary structure of the building and supported by diagonals in the top floor. To reduce building length in the area of the club, pillars are separated between third and fourth floor.



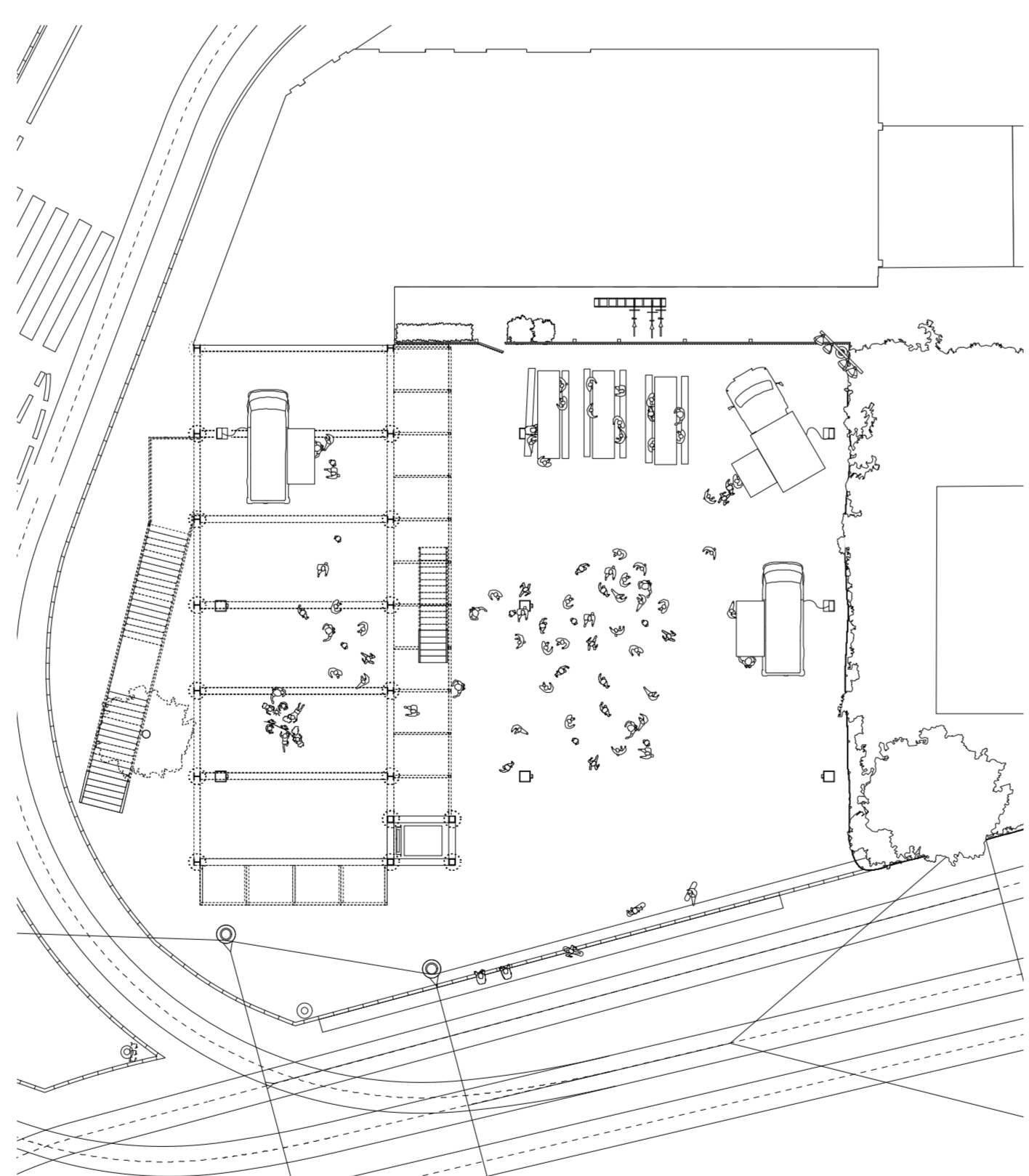


Ground floor
1:200

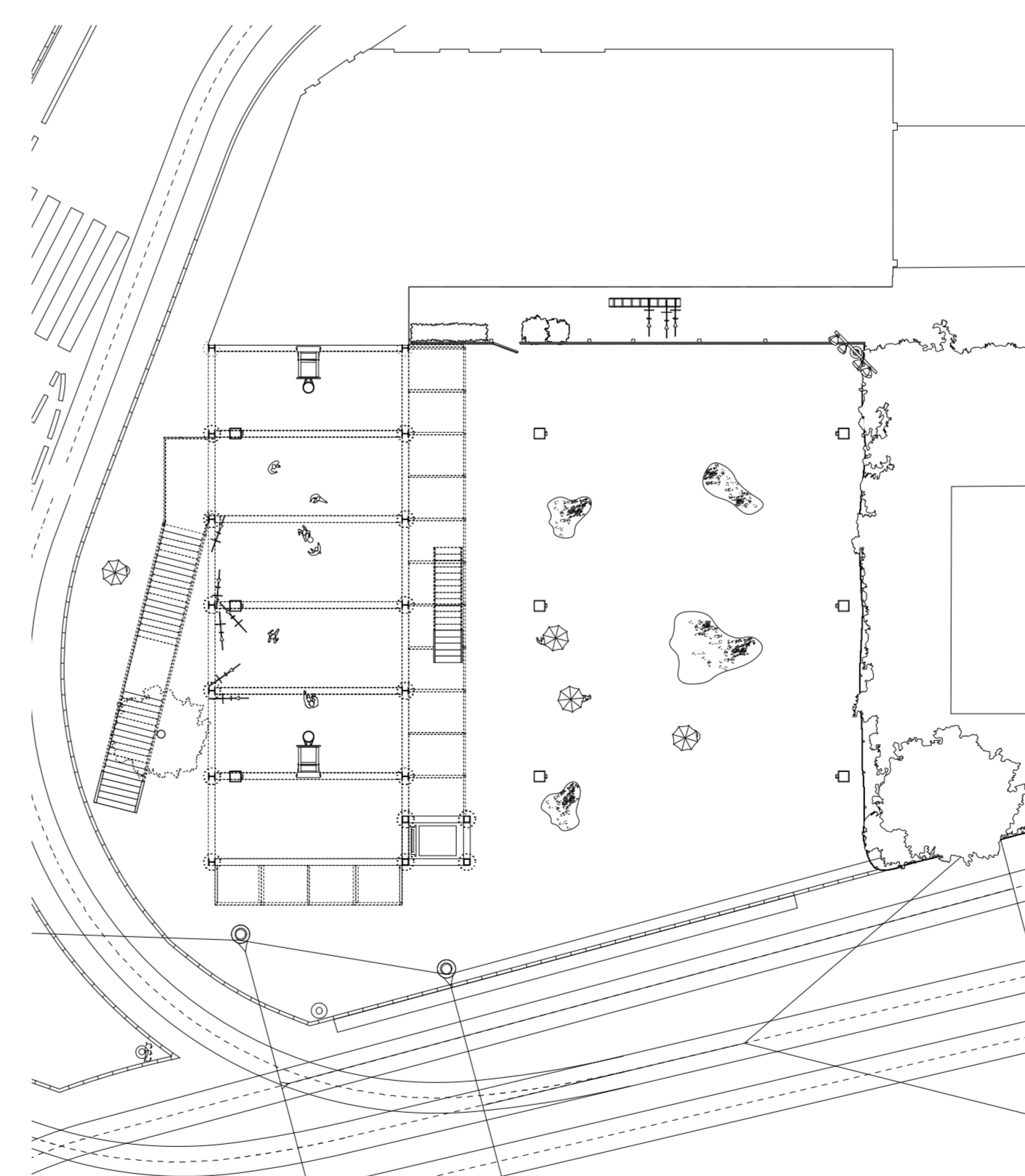
Nightlife
At midnight, petty people take the last train from all over the city to go clubbing at Kette. They meet their friends, have a beer and a cigarette before they go. At the foot of the case, the entrance decide whether people are allowed to get in.



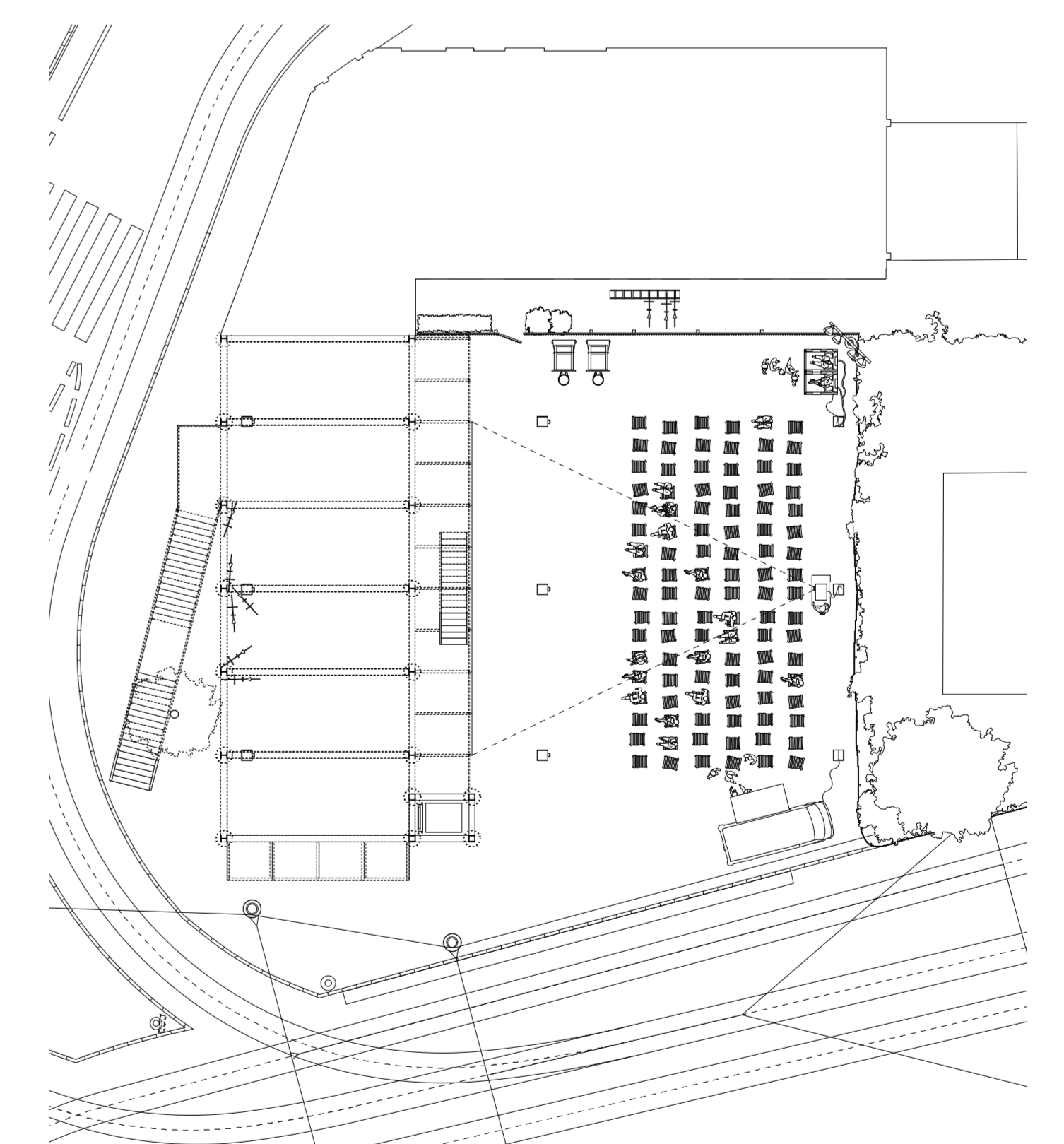
In the afternoon
Over the day, the team from the youth centre about some baskets while their friends are sitting on the step. A child from the neighbourhood likes to ride the bicycle under the watchful eye of its dad while people rush to get the train at Bahnhof Wiedikon.



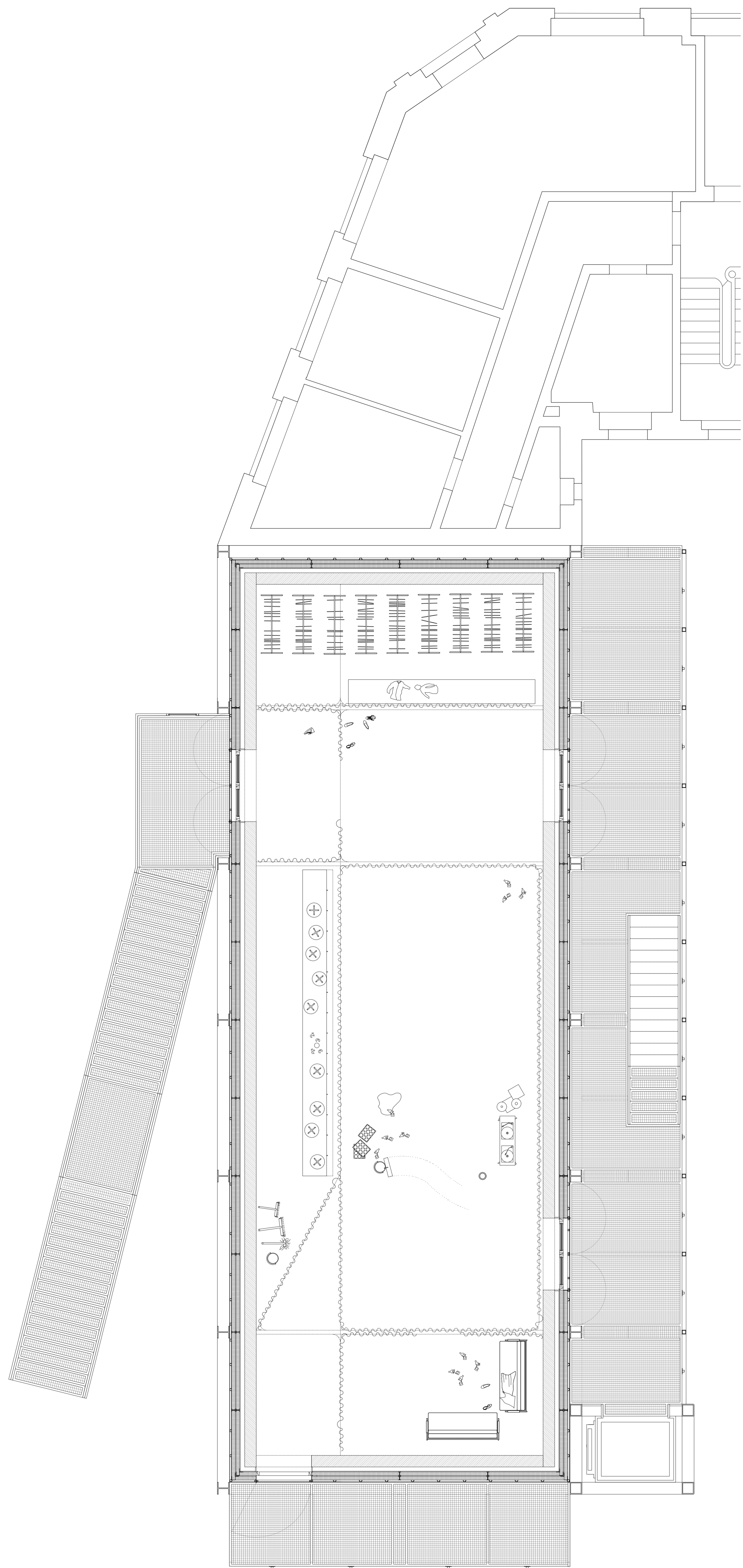
Neighbourhood Event
People from the neighbourhood pick up some old benches, take a stroll from the food trucks and talk to their neighbours while a group of children are painting on the asphalt with chalk.



Rainy day
On a rainy day, teenagers moved the benches under the building and commuters leave their bicycles under the building to keep them dry before they take their train from Bahnhof Wiedikon.



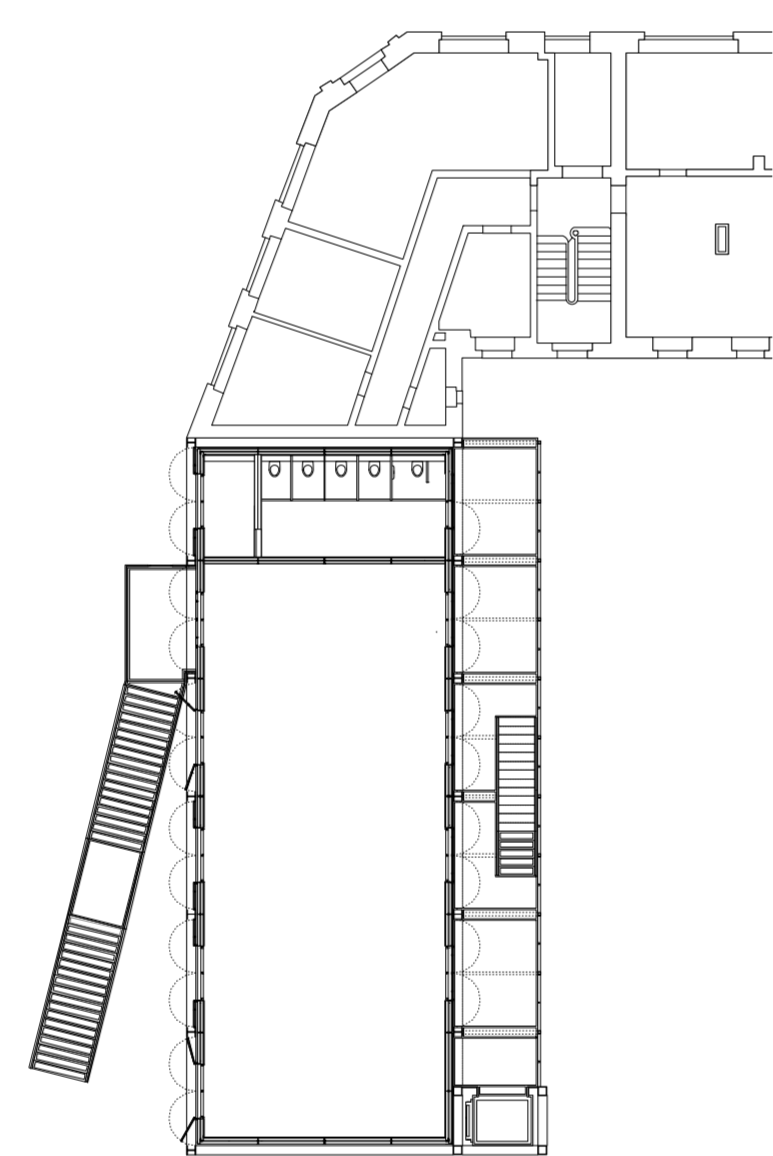
Climate
On a hot summer night, a movie is projected on the canvas mounted at the building. During the breaktime people lay some papers or grass in front of the bar to bring to the square for special occasions.



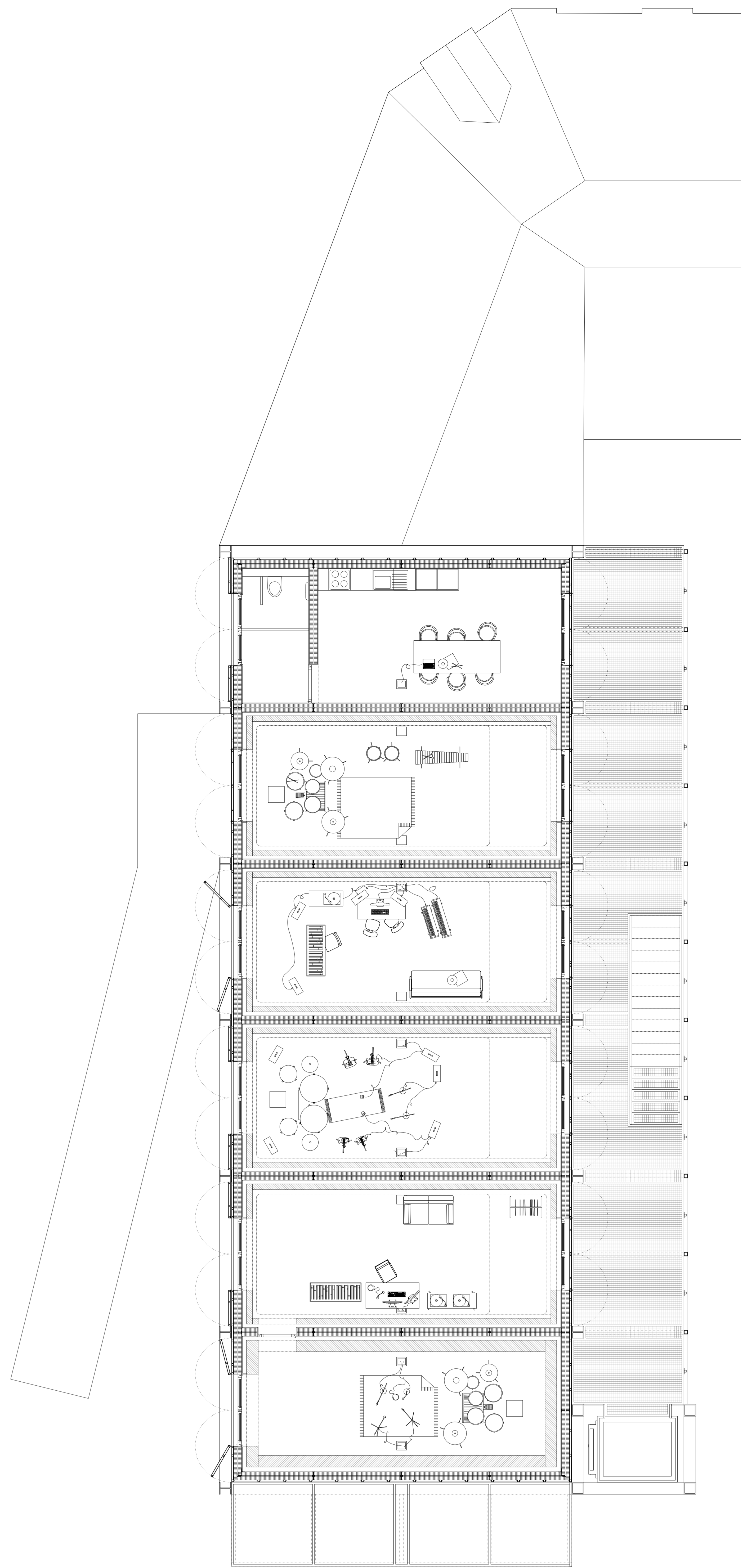
Nightclub

150

Interview with Lars Buck, architect of *Time and Games*
 "A club can only work with one entrance, where guests are welcomed by a selector. The selector has the difficult task to reject people who don't fit the desired public of the venue... After you passed the selector, you arrive at the point where you have to pay. Make sure people won't be able to catch a glimpse of the interior before they pay."



Youth Centre



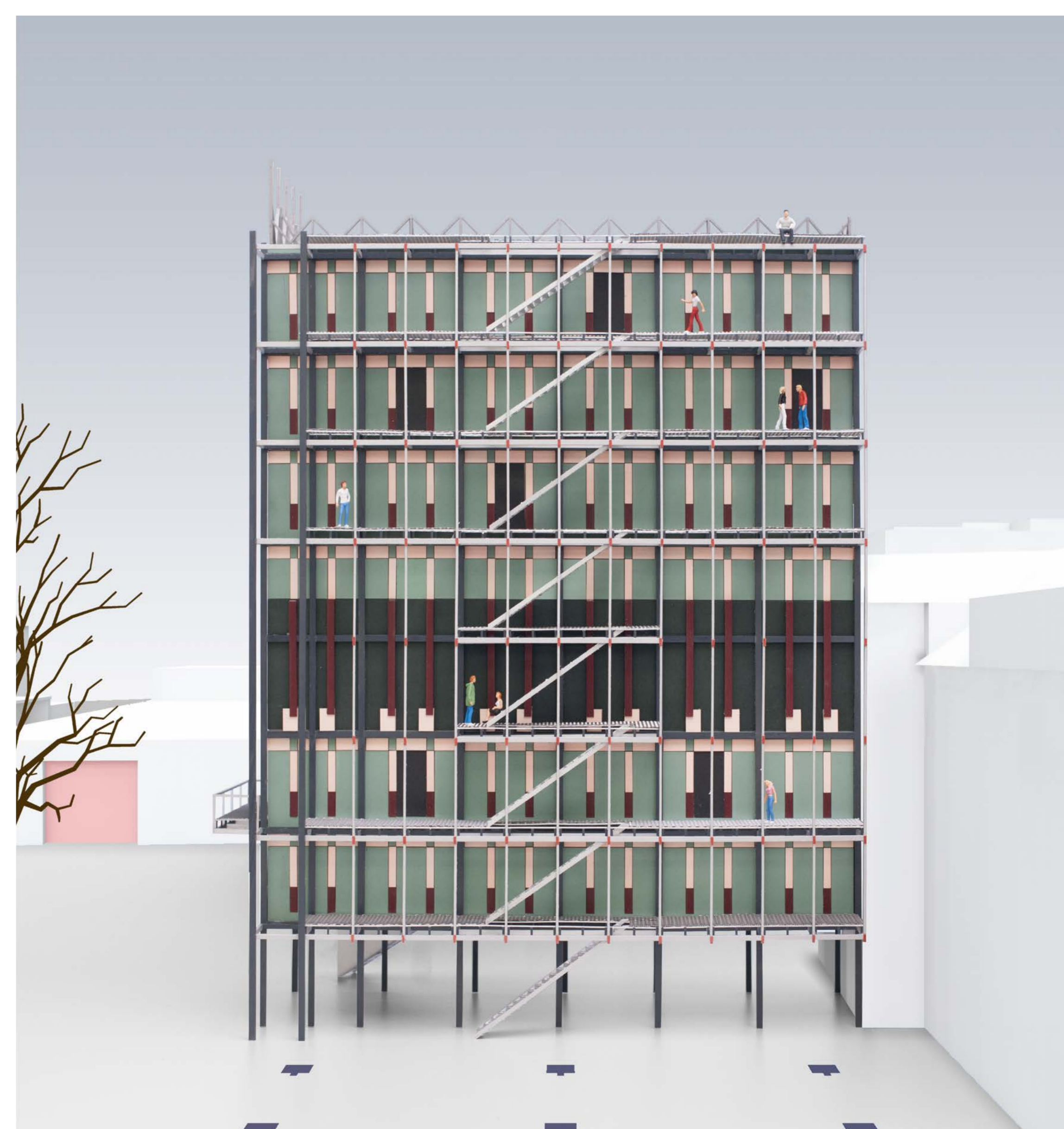
Rehearsal rooms

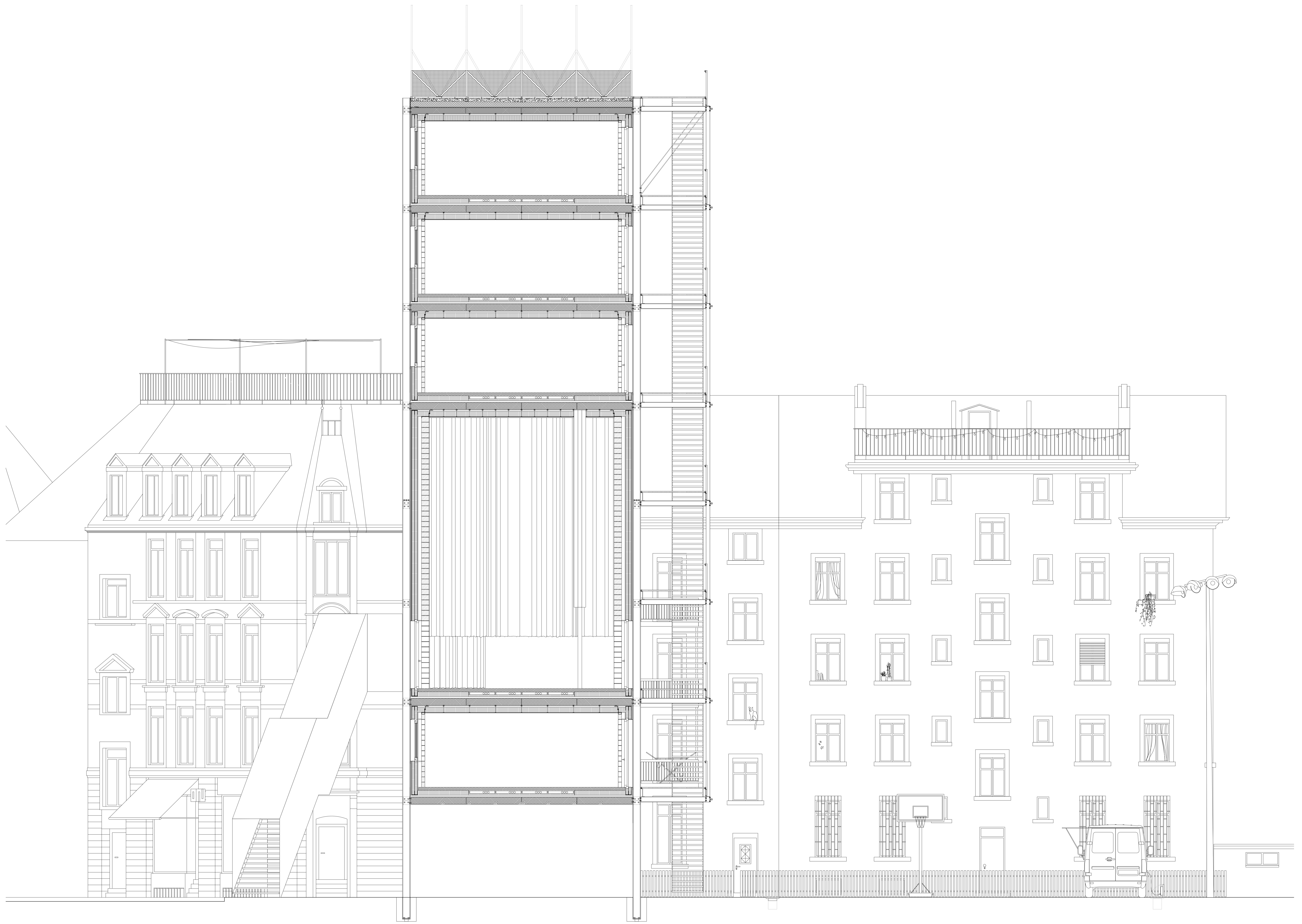
150

Interview with Benjamin Knif, DJ of *Alchikis*, an electronic band
 "There are hardly any instruments in our rehearsal room. We basically just work with the computer. Except when we need samples or vocals not available on databases, in this case we use our little recording studio."
 Interview with Samuel Schindig, head of *ThreeFour*, an indie rock band
 "When we moved to our current rehearsal room, we lived with a heavy black curtain. This curtain allows different acoustic atmospheres we can create just by moving the curtain. After we have rehearsed we leave the drum set, amplifiers, speakers and microphones where they are. We only remove the guitars and the bass."



Margerite Kahay by Meredith Frampton
 Colour map





Section
1/80



cover plate
with eye bolt

RHS profile 100

hand rail

z profile as
mounting bracket

gridiron

RHS profile 50
30x50 mm

HEB 100 profile
300x300 mm

PE profile 20 aluminum sheet,
210x100 mm, screw assembled

substructure covering
with waling bar

c profile
stop

neoprene
insulation

c profile as
padding

precast concrete
slab element

floor screw

tilt protection
with curtain track

ceiling lining
with curtain track

